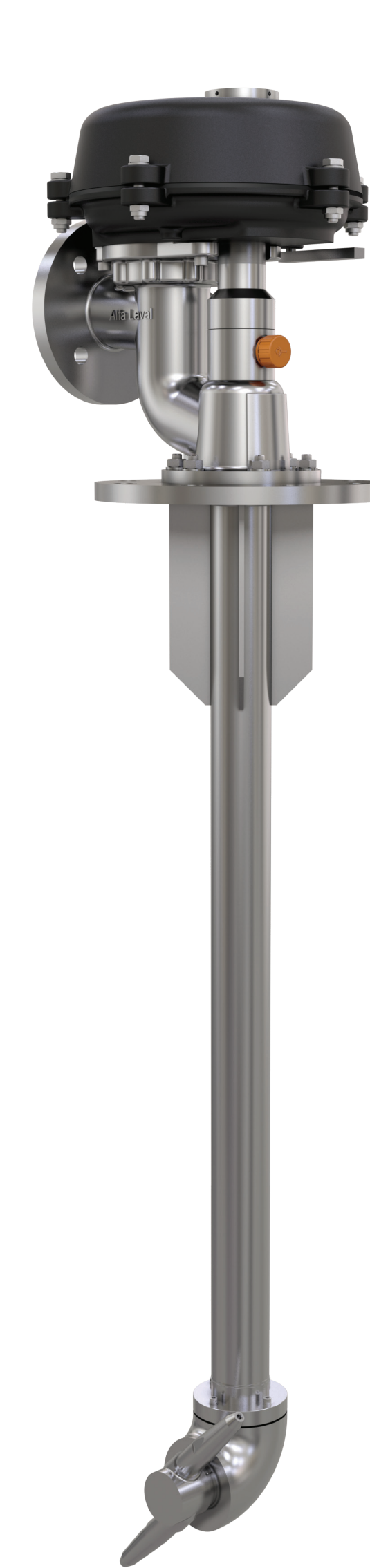


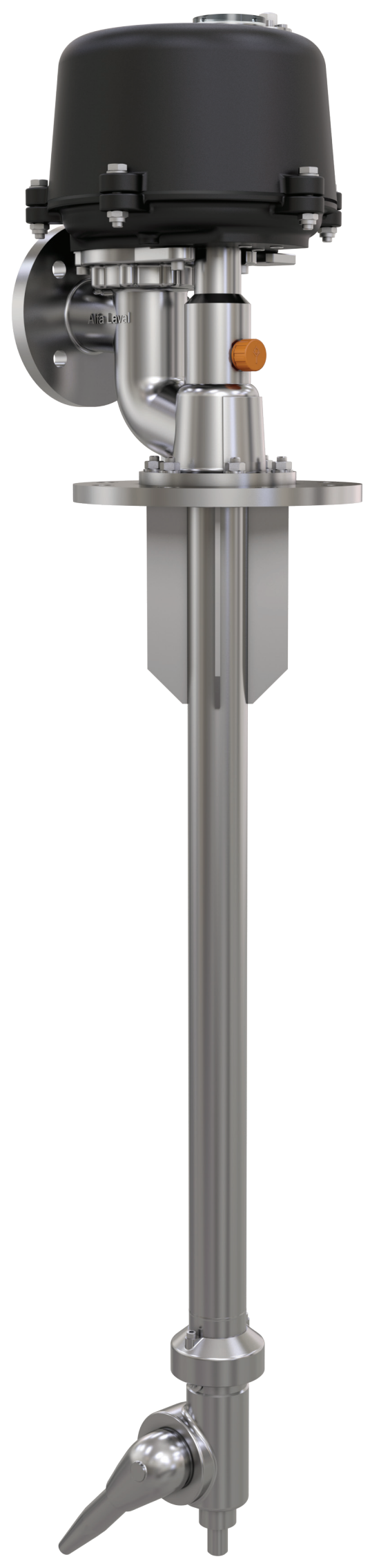
# Tank Cleaning Machines

## Small deck-mounted machines

- For chemical tankers, product tankers and offshore.
- Single-nozzle, dual-nozzle and multi-level versions.
- Stainless steel where in contact with cargo.
- Working pressure: 5–12 bar.
- Capacity: 5–45 m<sup>3</sup>/h.



i40D



i40S

## Large deck-mounted machines

- For crude oil tankers, bulk carriers and FPSOs.
- Inlet house in galvanized or epoxy-coated steel.
- Downpipe in galvanized or stainless steel.
- Cleaner head in stainless steel.
- Working pressure: 7–12 bar.
- Capacity: 30–110 m<sup>3</sup>/h.



i270

## Dual-nozzle machines with internal drive

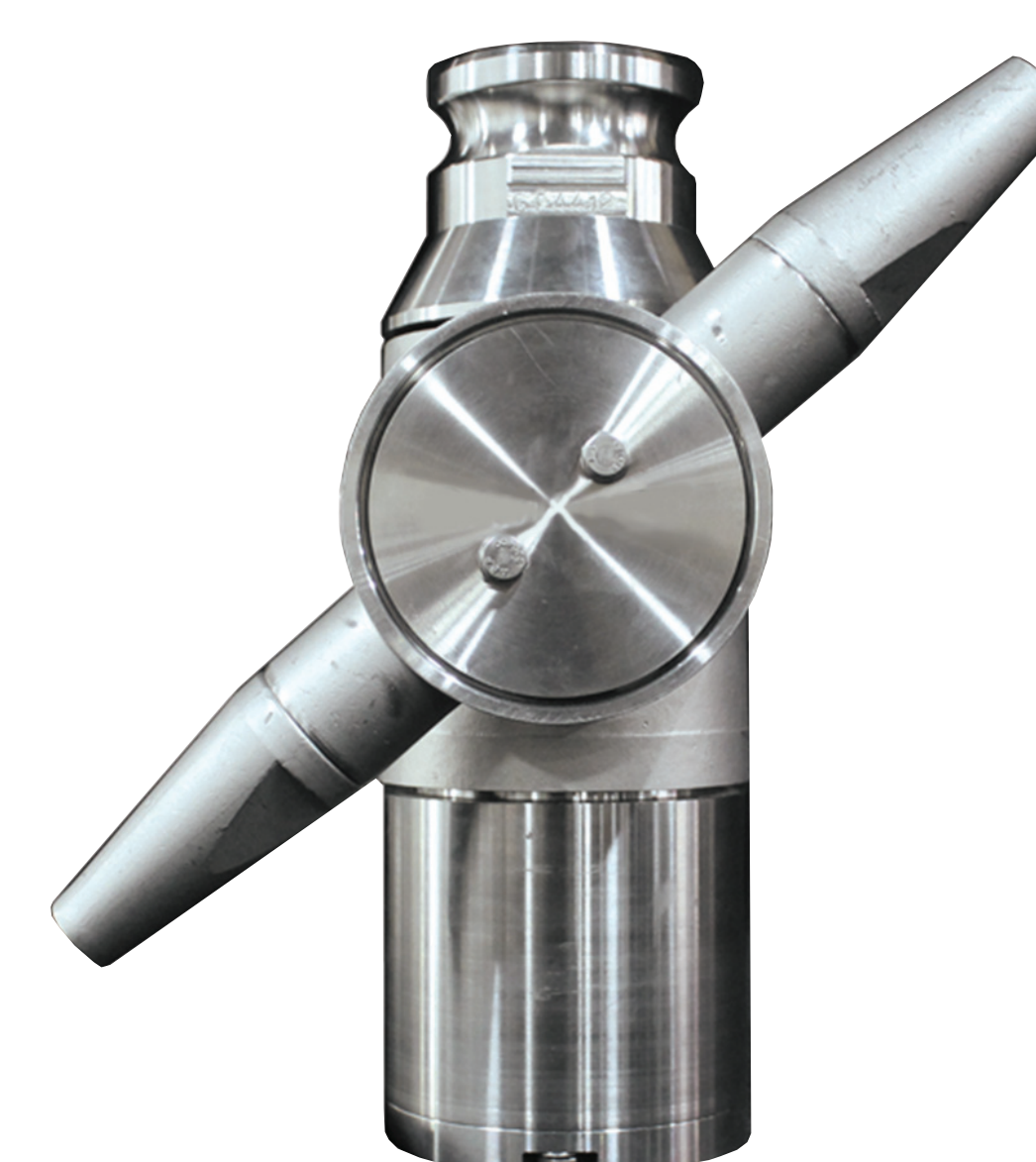
- For use on all types of tanks.
- Fixed and portable versions.
- Stainless steel where in contact with cargo.
- Many different thread connections and inlet flanges.
- Working pressure: 5–12 bar.
- Capacity: 7–90 m<sup>3</sup>/h.



TZ-75

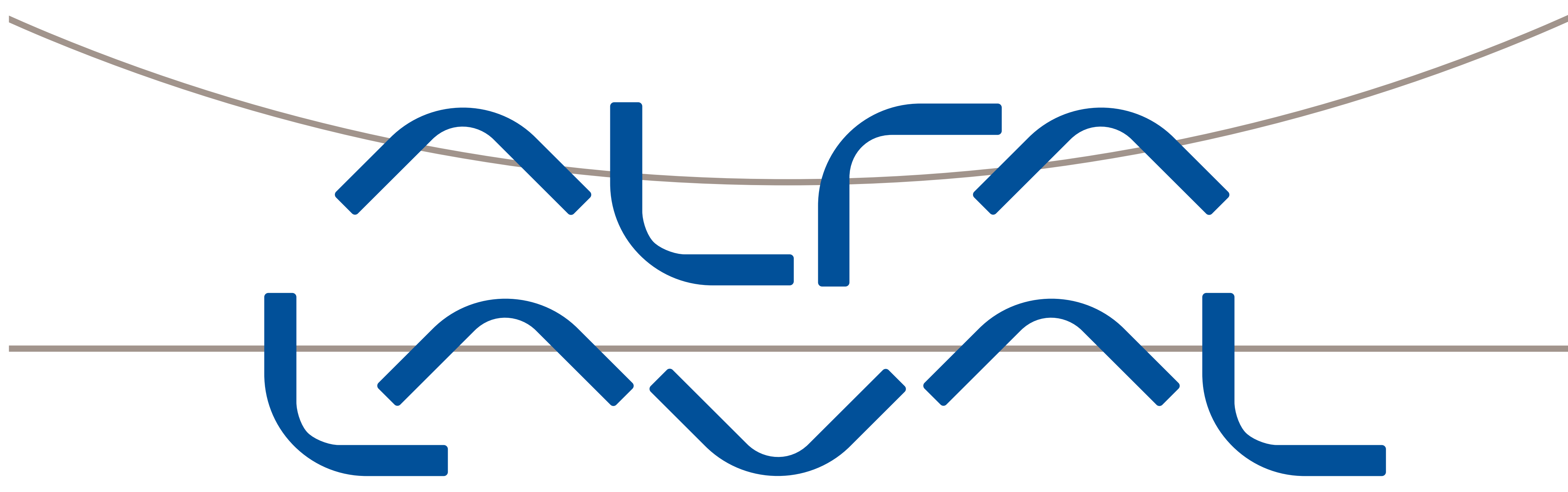


TZ-82P

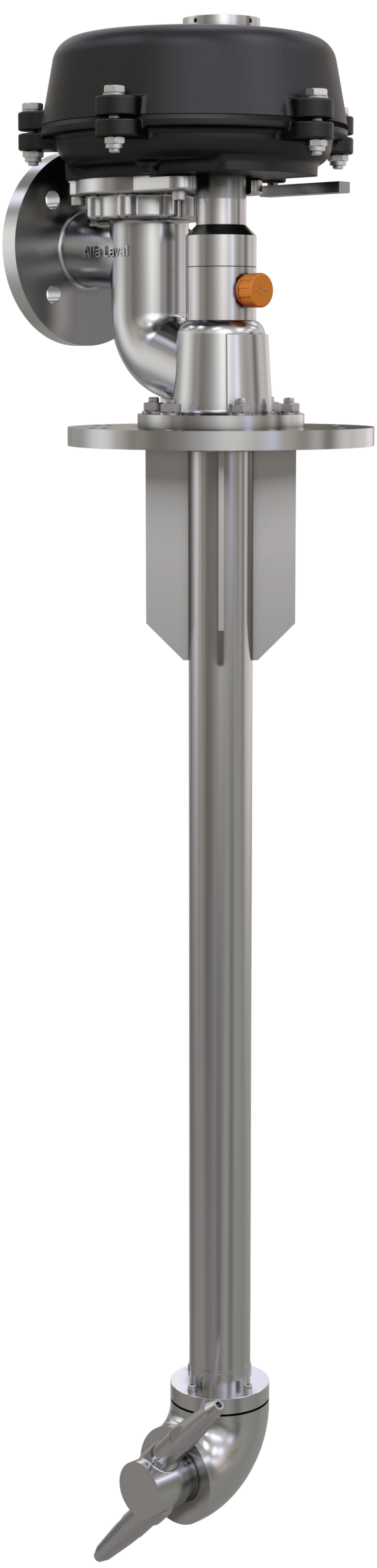


GJ4



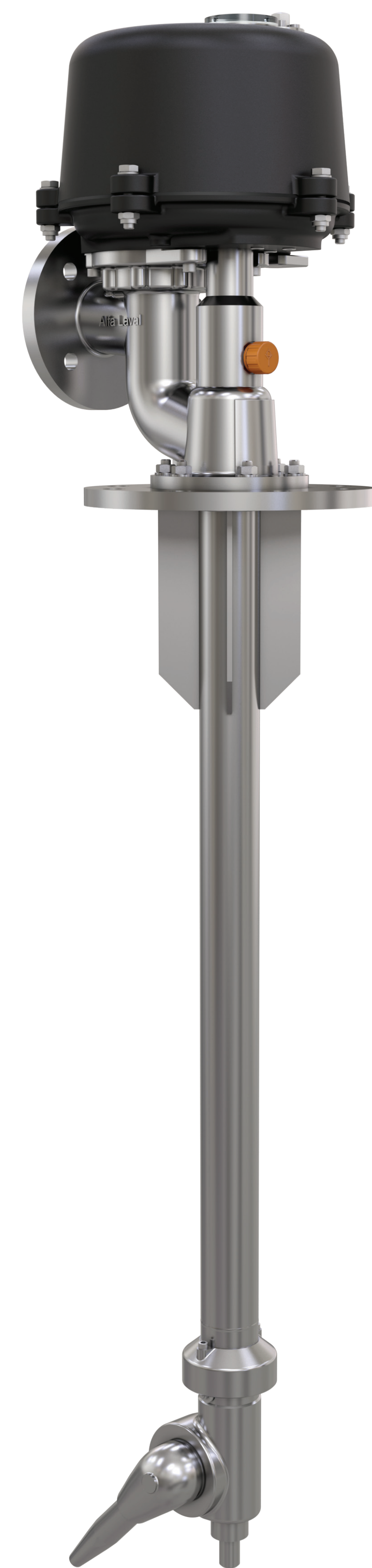


# Tank Cleaning Machines



## Reduced maintenance time

- Maintenance-free below deck due to stainless steel ball bearings used in the cleaner head instead of traditional slide bearings.
- Estimated savings > EUR 400 per machine at 5 and 10 year dockings.



## Energy and water savings

- Optimized nozzle design ensures high impact cleaning with reduced water consumption.
- Up to 10% savings in water and energy consumption.
- Typical saving per hour of hot water tank cleaning > 2-5 EUR per machine per hour.
- Reduced water consumption can also lead to reduced slop that has to be delivered to shore.